



PROMETHEUS®

LONDON METAL CLAY

Kindly sponsored by Prometheus Hobby



DAISIES PENDANT INTERMEDIATE PROJECT

You will need:

- ◆ Prometheus Silver 950 Clay – minimum of 7g
- ◆ Prometheus Silver 950 Paste
- ◆ Acrylic roller
- ◆ Playing cards
- ◆ Acrylic block or CD cover
- ◆ A non-stick surface a little larger than your design
- ◆ Olive oil, badger balm or Slik
- ◆ Small flower shaped cutters
- ◆ Baking sheet (Teflon)
- ◆ Pointed clay shaper
- ◆ Small airtight container
- ◆ Distilled water in an atomiser spray bottle
- ◆ Cling film
- ◆ Air tight container
- ◆ Laminated work mat, tile or smooth non-stick surface



Preparation:

Remove a minimum of 7g of clay from the packet, place in the cling film and roll a couple of times to get the clay loosened up. The best way to do this is by using your roller to roll the clay while it is still in the cling film. Add a couple of drops of water to it, if you need to.

Creating the flowers:

First, rub oil lightly on your hands to prevent the clay sticking to your fingers. Remove your clay from the cling film and quickly roll into a tight ball using the palm of your hands. This wonderful clay is very clean so you shouldn't end up with any on your hands.

Placing your cards on either side of the clay, roll down to 4 cards thick, then use the cutters to cut out your flower shapes. If they are intricate shapes, like the ones in



the picture, you may wish to make a couple of spares in case of breakages when you file.

Move them as you create them onto a piece of Teflon, then use an oiled cocktail stick to create a hole where you want your gem to be. Pop your gem into the hole you have just created making sure that the flat top, (the table), of the stone is level with the top of your clay, if not slightly recessed.

Set aside to dry.

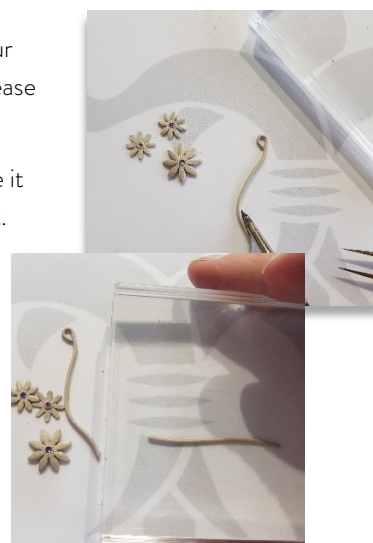


Rolling out:

Take a small piece of your remaining clay and form into a sausage shape with your fingers. Use the acrylic block from side to side to reduce the diameter and increase the length of your clay to form a 'snake'.

This first one will become the longest stalk. While the clay is freshly rolled, move it to some Teflon sheet, create a loop at the top and make some gentle curves in it. Then spray the air above the design with water and lightly cover with cling film to keep the clay gently hydrated while you make the remaining stalks.

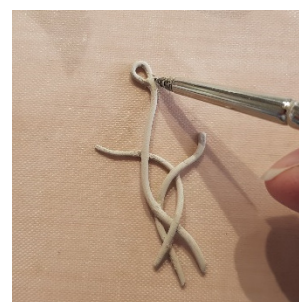
Make two shorter stalks the same way and carefully overlap the resulting stalks together.



Stalks

Take something with a round barrel, like a cocktail stick, approximately the same diameter as the stalks and carefully dent the bottom stalk where the overlap occurs. This will reduce the profile of the piece, makes for a better join and looks better. Put a drop of paste in the dip you just created and replace the topmost stalk. Continue until all the overlapping joints are done.

Set aside to dry.



Leaves:

Take a small amount of your clay and form a ball, then squish one end a bit and roll between your fingers to create a teardrop shape. Squash flat and use a craft knife to make veins on the leaf.

Set aside to dry.



Assembly:

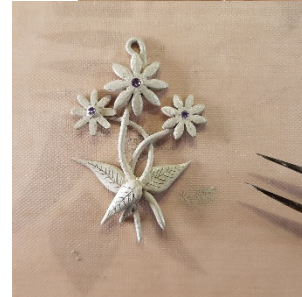
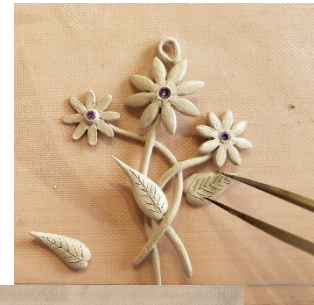
Before sticking things together, it is worth spending a bit of time experimenting with what you want where. When you are happy with the loose assembly, take a photo with your phone so that you can refer to it as you make up the piece.

Refine all the flowers and use clay 'butter' made with a very small amount of your clay and the tiniest bit of distilled water to reinforce the joints between the stalks. I tend to have a little bit of clay and a blob of water near it and use my clay shaper to mix the two together as I need it. The clay butter works to reinforce the joints and will not shrink back, unlike paste.

Add the flowers and the leaves when you are ready. Use paste to stick the elements on and clay butter to reinforce the joints after the paste has dried.

Use a baby wipe, or similar, to wipe over everything, clean the top of your gems.

Dry thoroughly!



Firing and polishing:

Fire at 800°C/1470°F for one hour.

Although the finished item looks very delicate, it is very strong and will happily stand up magnetic polishers and tumblers so use your usual methods to reach a high shine or apply a patina if you prefer.



PROMETHEUS®